

- In addition to routine checks for each use, PPE should regularly undergo a detailed inspection by a competent person. Petzl recommends an inspection every 12 months and after any exceptional event in the life of the product.
- PPE inspection should be conducted with the manufacturer's Instructions for Use.

Download the instructions at PETZL.COM.



GRIGRI BELAY DEVICES



1. Known product history

Any PPE showing unexpected degradation should be quarantined, pending a detailed inspection.

The user should:

- Provide precise information on the usage conditions.
- Report any exceptional event regarding his PPE.

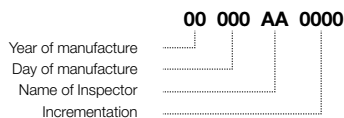
(Examples: fall or fall arrest, use or storage at extreme temperatures, modification outside manufacturer's facilities...).

2. Preliminary observations

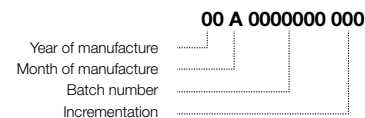
Verify the presence and legibility of the serial number and the CE mark.

Note: the serial number code on our products is evolving. Two types of code will coexist. See below for details on each serial number code.

Code A:



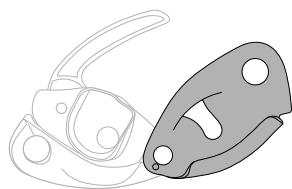
Code B:



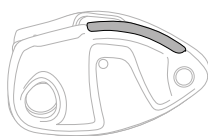
Verify that the product lifetime has not been exceeded.

Compare with a new product to verify there are no modifications or missing parts.

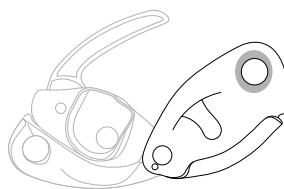
3. Checking the moving side plate



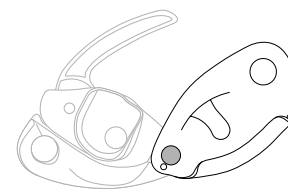
- Check the condition of the moving side plate (marks, deformation, fouling, cracks, wear...). If you see a hole in the side plate, retire the product.



- On the GRIGRI +, check the condition of the wear plate.

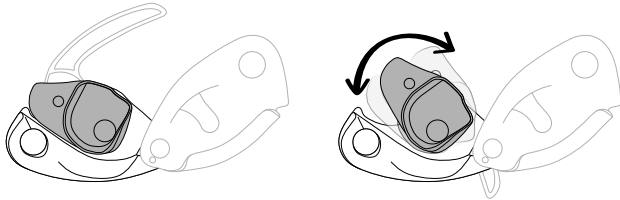


- Check the condition of the attachment hole (marks, deformation, cracks, corrosion...).

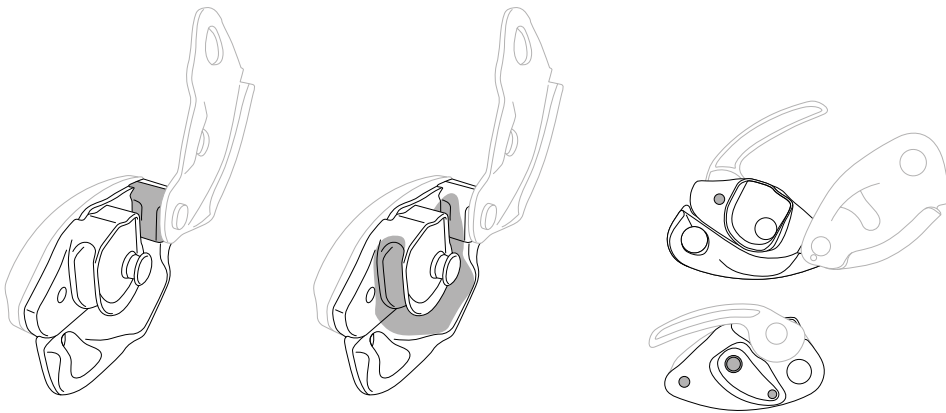


- Check the condition of the rivets (marks, deformation, cracks, corrosion, absence of play...).

4. Checking the condition of the frame

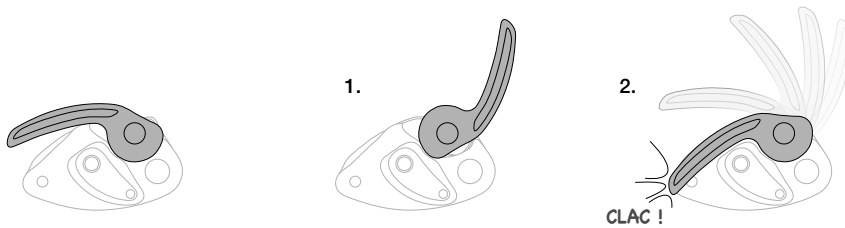


- Check the condition of the cam and its axle (marks, deformation, fouling, cracks, corrosion...). Check the cam's mobility.



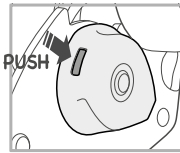
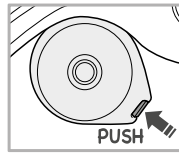
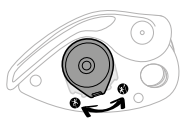
- Check the condition of the friction plate (marks, deformation, fouling, cracks...).
- Verify the absence of foreign objects (sand...) or lubricant on the rope channel.
- Check the condition of the rivets (marks, deformation, cracks, corrosion, absence of play...).

5. Checking the condition of the handle

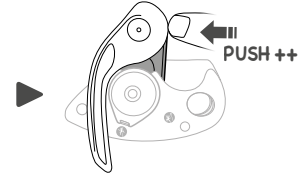
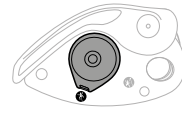
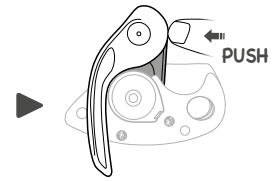
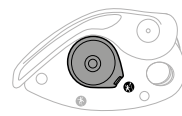


- Check the condition of the handle (marks, deformation, cracks...).
- Check that the handle return spring is working properly.

6. Checking the condition of the selector knob (GRIGRI + only)



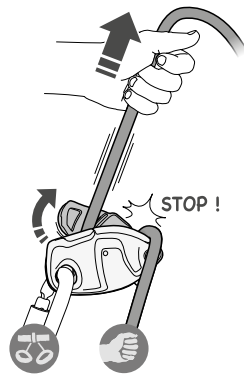
- Check the condition of the selector knob (marks, deformation, cracks...).



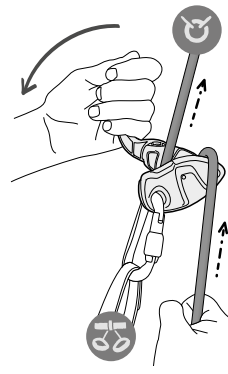
- Check the selector knob for proper function. (When rotated, the cam offers more resistance in the lead climbing position than in the top-rope position).

7. Function check

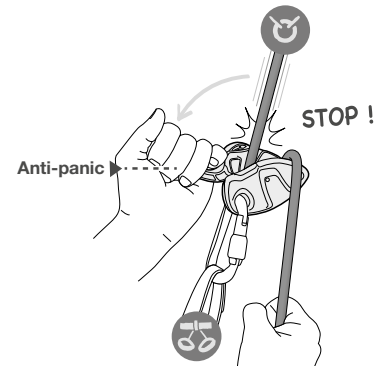
- Do a function check with the device on the harness. Do this test with your smallest diameter rope.



1. Pull on the climber-side rope; the device should lock the rope.



2. Hang from a low height. Pull the handle while holding the brake-side rope. The rope must slide through the device.



3. Checking the anti-panic on the GRIGRI +. Hang from a low height. Pull the handle QUICKLY while holding the brake-side rope. The rope should be locked.

8. Appendix: examples of GRIGRI that are worn, or that should be retired

- Bent GRIGRI



- Perforated moving side plate



- Bent handle



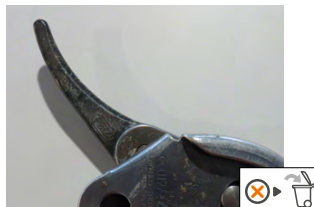
- Broken handle



- Worn-out rope channel



- Broken handle



- Rope channel

